

Growth of the Mental Health Consultation Project in NYS



Early Care &
Learning Council
United to Promote Quality



Infant & Early Childhood Mental
Health Consultation
Empowering Caregivers to Support Emotional Wellbeing

What is IECMHC?

Infant and Early Childhood Mental Health Consultation (IECMHC) is a prevention-based intervention teaming mental health professionals with early care and education providers and families to improve adults' ability to positively develop children's social, emotional, and behavioral health from birth through age five.



Program Growth



*Classrooms in this diagram represent center-based, family and group family child care settings.

Our Model of Consultation

National studies have found a correlation between consultation and **decreased stress in teachers, resulting in reduced turnover**. These changes in provider capacity accumulate into **healthier social-emotional climates for young children**.

Our model of consultation is **relationship based, strength based, and grounded in the principles of best practice**. The MITCH data system is intentionally integrated with our consultative approach in order to allow us to **accurately gather meaningful data** that can help us understand the work at all levels of influence.

Key Components of Consultation:

Increasing the quality of early
care environment

Strengthening the support network
for families with young children

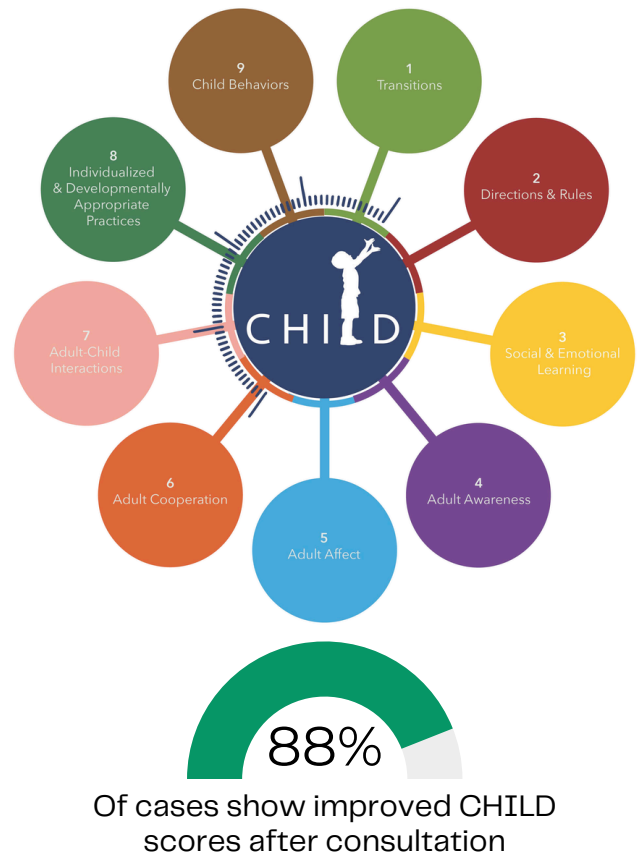
Improving teacher retention
and resilience

Evaluating impact and outcomes
over time to ensure efficiency
and effectiveness

NYS Climate of Healthy Interaction for Learning and Development (CHILD) Tool

Our consultation model is grounded in evidence-based, best practice. Our consultants utilize the CHILD tool to support assessment, action planning, and critical self-reflection. The CHILD is a comprehensive toolkit for improving the quality of early childhood care and education.

It includes an observational measure of classroom climate; resources for teachers; and materials for early childhood mental health consultants, coaches, and others who provide support and professional development to teachers. The CHILD was developed by Yale University scientists based on decades of research, teaching, and raising our own children. (Yale website: socialemotionalchild.org)



Impact: Children and Providers Served

782

classrooms served



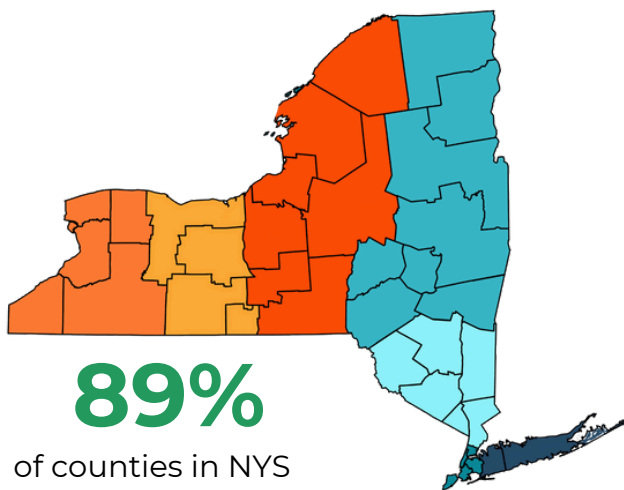
8,472

children in classrooms receiving Consultation

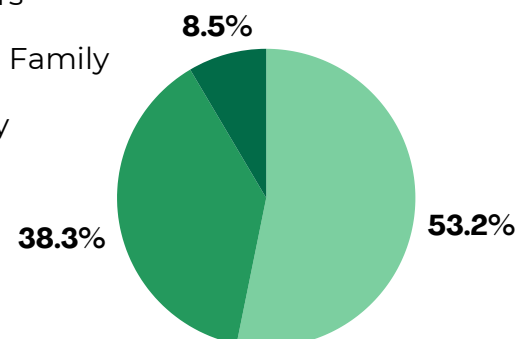


37,817

children in programs receiving Consultation



Types of Programs Served



Gilliam, W.S., & Reyes, C.R.. (2017). Climate of Health Interactions for Learning & Development, Draft Manual [Unpublished manual]. Edward Zigler Center in Child Development & Social Policy, Yale Child Study Center.

Center of Excellence for Infant and Early Childhood Mental Health Consultation (2022). Status of the Evidence for Infant and Early Childhood Mental Health Consultation (IECMHC). <https://www.iecmhc.org/documents/CoE-Evidence-Synthesis.pdf>