



# INFANT & TODDLER MENTAL HEALTH CONSULTATION NYS IMPACT MAP

## What is ITMHC?

ITMHC is an evidence-based service available to early care and education providers. Consultants work collaboratively with programs to reduce challenging behaviors, improve children’s social and emotional competency, and decrease the prevalence of suspension and expulsion of BIPOC children. Learn More: [Zero to Three](#)

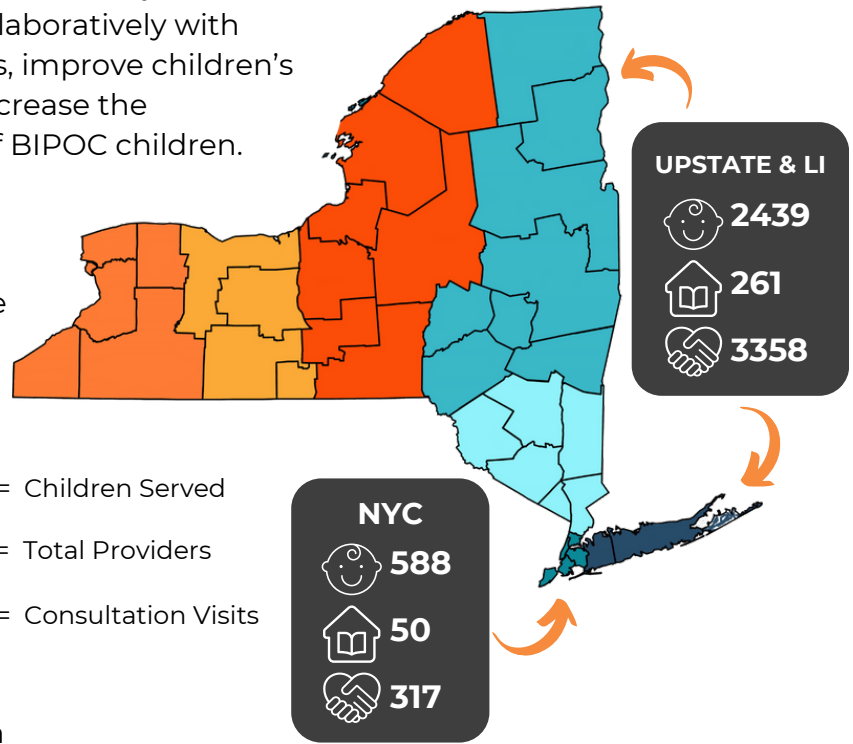
## Who is ITMHC for?

ITMHC focuses on providers who offer care for children 0-36 months. Consultation is a resource to support adults in making changes to benefit the classroom or program as a whole.

## ITMHC helps early care and education providers to:

- Improve children’s social and emotional functioning
- Reduce challenging behaviors
- Decrease the prevalence of suspension and expulsion of BIPOC children

- = Children Served
- = Total Providers
- = Consultation Visits



## WHAT WOULD THIS IMPACT LOOK LIKE IF WE INCREASED FUNDING TO ITMHC BY \$4.5 MILLION?

If the State was to fund **26** additional ITMHCs & **10** supervisors across NYS we would see at least:

- 2,500** additional children served
- 250** additional participating providers
- 3,000** additional consultation visits
- 175%** increase in service from previous levels across NYS

### TESTIMONIALS:

“[Our Consultant] helped us realize our strengths. She listened and gave us ideas for approaching parents with a variety of concerns. **This program is likely to become a lifesaver for staff, children and families.**”

“Since implementing and setting social and emotional goals for our toddler classroom, we have seen a **tremendous change** in day-to-day success and functionality.”