



Early Care & Learning Council

United to Promote Quality

Early Care & Learning Council Specialized Groups



Data Advisory Committee

Data Advisory Committee is a group of CCR&R Data Administrators representing a cross section of CCR&Rs across the state; Urban, Rural, CAP Agencies, etc. The team meets quarterly over Zoom to discuss topics related to the MATCH database, enhancement requests, reporting, and other topics as determined by the group.
Contact- Donna Fredlund:
dfredlund@earlycareandlearning.org



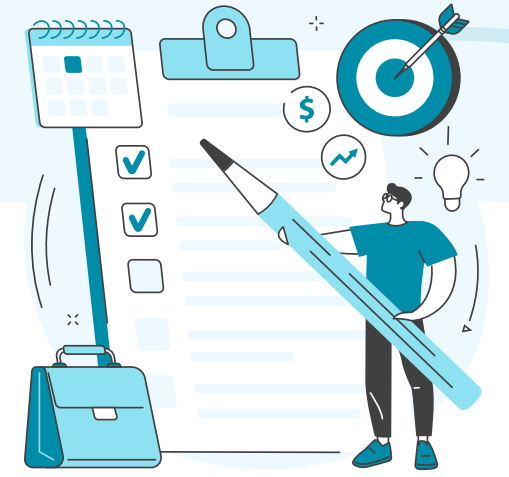
Multicultural Workgroup

ECLC manages a multicultural workgroup offered to all CCR&R agency directors and staff members throughout our network. Members will meet once a month to hold a community oriented safe-space focused on shifting monocultural mindsets to progressive intercultural competence for improved understanding of Diversity, Equity, Inclusion, and Belonging that can positively impact each member's respective positions and agencies.
Contact- Elijah Foulks:
efoulks@earlycareandlearning.org



Health Care Consultants

All CCR&R employed Health Care Consultants meet quarterly. HCC's are encouraged to send agenda items and additional questions in advance to the meeting facilitator. It is OCF's intention to join a portion of each meeting, in order to answer questions and provide updates to the field.
Contact- Brooke Ricci:
bricci@earlycareandlearning.org



Legally Exempt

Legally Exempt staff work with all providers, new and existing, to support their work caring for children. This workgroup will provide guidance on the development of a series of short trainings, possibly video or podcast recordings, that will be developed to deepened LE provider understanding of ACEs, the Protective Factors Framework and trauma-responsive approaches. This group will meet quarterly, provide a platform to connect and troubleshoot issues that arise.
Contact- Mariah King:
mking@earlycareandlearning.org



Infant Toddler Specialists

Infant Toddler (IT) Specialists work to offer training and on-site consultation to infant and toddler care providers that promotes warm, positive relationships between caregivers, children and families. IT specialists emphasize the importance of infancy, healthy development, early learning literacy and environments and so much more. The IT Specialists meet virtually as a statewide group every month and in-person twice a year, to share ideas and resources, receive training, and collaborate as a collective professional network.
Contact- Rachel Roberts:
rroberts@earlycareandlearning.org



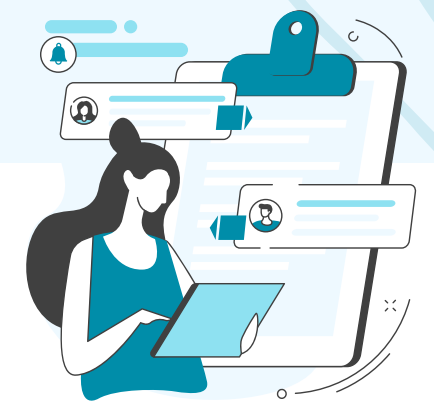
LGBTQ Affinity Group

This group is designed to explore the experiences of lesbian, gay, bi, trans, queer, intersex, asexual, pansexual, and 'Two-Spirit' people working in early childhood care and education. Lyndon Cudlitz will be the lead consultant facilitating discussion on the joys, challenges, and nuances of the group's work, identities, communities. Each session will highlight a different planned topic, as well as provide space for group members to raise their own topics and act as a collective sounding board for one another. Attendance is confidential, and we welcome those questioning or exploring their attractions and/or gender. Once per quarter, for a total of 3 sessions, the meeting will be open to non-LGBTQ people committed to growing their allyship.
Contact- Fannie Glover
fglover@earlycareandlearning.org



ITMHC

Infant Toddler Mental Health Consultation (ITMHC) is a relationship-based and collaborative process between Mental Health Consultants and providers, while also being individualized to respond to the direct needs of the program. The Trauma Advisory Workgroup, guided by ECLC's ITMHC department, meets on a monthly basis and works to support CCR&Rs, and the providers whom they serve, to become Trauma Informed Agencies.
Contact- Allison Graham:
agraham@earlycareandlearning.org



Resource and Referral Specialists

Child Care Resource and Referral Specialists help parents locate and choose quality child care by providing referrals to local child care providers, information on state licensing requirements, availability of child care subsidies, and other information. This groups meets to discuss updates in their region along with challenges they have been experiencing.
Contact- Mariah King:
mking@earlycareandlearning.org



CACFP Specialists

CACFP Specialists are CCR&R staff members who assist in the promotion of the Child & Adult Care Food Program (CACFP) and connect child care programs with resources and opportunities. This group meets on a quarterly basis to discuss updates in CACFP, share best practices, and provide resources.
Contact- Mariah King:
mking@earlycareandlearning.org



Trainer's Connection Forum

Credentialed, verified, content specialists and all other CCR&R employees that implement trainings are invited to attend. Trainers address challenges and share resources related to training and technical assistance to ECE providers. In addition, we offer peer support for obtaining the T-TAP credential. The meetings are hosted on zoom and meet on a quarterly basis.
Contact- Brooke Ricci:
bricci@earlycareandlearning.org



SOE

This group is for those working on the Standards of Excellence (SOE) application or 18 month check in process. Quarterly meetings provide an opportunity to collaborate and share resources, discuss challenges that have risen and explore the Sharepoint submission site.
Contact- Mariah King:
mking@earlycareandlearning.org



Learning Cafes

ECLC hosts a series of educational forums that inform as well as provide actionable steps for our audience members to apply in their respective roles and responsibilities. The Learning Café is an intentional effort on behalf of the Equity & Inclusion Department to introduce our network to expert speakers presenting on a wide range of topics designed to support participant interests. Learning Cafés are held on the second Thursday of each month from 12pm-1pm and are open to the public.
Contact- Elijah Foulks:
efoulks@earlycareandlearning.org